

Precision with advanced lens innovation

CAPTURING
OVER
2 MILLION
IMAGES
YEARLY!

Illuminate the possibilities

RetCam® Envision represents a huge leap in pediatric ocular imaging.

It establishes new standards in the field with exciting new developments in image quality, magnification, connectivity, and workflow efficiency.

RetCam Envision embodies our commitment to innovation, and developing new and better solutions for patients and the healthcare professionals who serve them.



Brilliant imaging

Lighting the way with confidence

Enhanced illumination and an ultra-wide field of view makes RetCam Envision the leader in image quality. Its patented Light Shaping Technology, paired with 130° wide-view, 80° magnification and portrait lenses, supports users with enhanced visualization and brilliant color images. View in full-screen mode with maximum detail for earlier detection of eye diseases and timely intervention.





80° magnification lens

Enhance diagnostic confidence with detailed views of:

- Pediatric Disease Entities
- Macular Disorders
- Vascular Details
- Tumors and Lesions
- External Eye



Seamless connectivity

Collect, protect, and transfer data with ease

RetCam® Envision provides seamless PACS integration and enhanced network capabilities. It's easier than ever to connect with worklists to exchange and synchronize data. Images can be securely and centrally stored within PACS, significantly improving efficiency by reducing patient intake time with manual data transfer and image archiving.

Optimal efficiency

Improved efficiency, workflow and ergonomics

RetCam Envision is a perfect example of advanced technology in a practical application. Designed to optimize your exam workflow, with detachable lenses, seamless PACS integration, easy access to patient data, plus the convenience of fluorescein angiography (FA). RetCam Envision manages the process, so you can focus on the patient.



RetCam® Envision

Capturing over 2 million images yearly

Intuitive 21.5" touchscreen for ease-of-use and improved workflow

Optional DICOM workflow for seamless integration

Detachable lenses:

- 130 degree lens
- 80 degree lens
- Portrait lens

Handpiece with FA barrier filter for quick engagement

Height-adjustable cart for proper positioning and operator comfort





Leading the field in innovation

With the addition of the 80° magnification lens to its portfolio, Natus continues to develop innovative solutions that meet the needs of healthcare professionals.



Convenient cleaning with removable lenses

Easily detach the 80° and 130° lenses for cleaning and disinfection.

- Minimize downtime by disinfecting one lens while another is in use
- Increase confidence with validated disinfection protocols





Fluorescein angiography helps deliver essential information

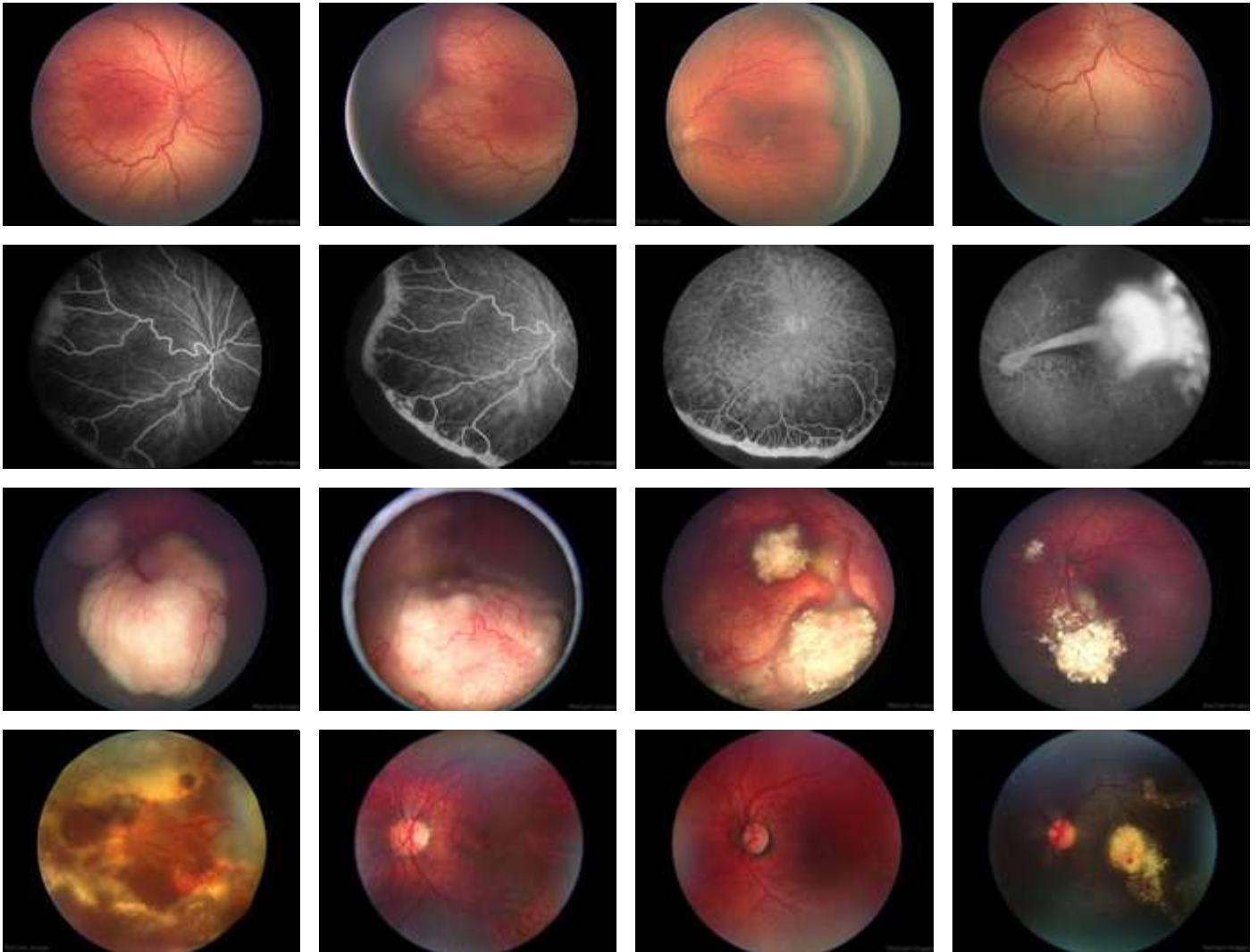
RetCam® Envision's fluorescein angiography (FA) option is a diagnostic aid for examining the circulation of the retinal blood vessels and assisting in the detection of anatomical abnormalities. It allows users to visualize the absence or presence of blood flow within the eye.

Benefits of FA

- Helps to examine the perfusion of the retinal blood vessels
- Provides sharp visualization of leaking vessel defects and neovascularization in ROP
- Documents and supports the diagnosis of many pediatric ophthalmic diseases and conditions



Image library




Product or lenses are not available in all countries. Contact your Natus Sensory representative for availability.

Capturing the eyes of the world

Improving patient care starts here

The **Vision Care Academy (VCA)** provides access to educational programs and resources designed to enrich product expertise and clinical knowledge. It includes the **Neonatal and Pediatric Eye Imaging Toolkit**, and continued growth through a network of industry experts in the field.


Membership is free and open to all –
JOIN NOW!

Confidence in every sense

©2025 Natus Sensory Inc. All Rights Reserved. All product names appearing on this document are trademarks or registered trademarks owned, licensed to, promoted or distributed by Natus Sensory Inc., its subsidiaries or affiliates. **033370 RevE.**

natus.
sensory